



TEACHER ISOLATION IS REAL, BUT ARE VIRTUAL NETWORKS THE ANSWER?

IALLT 2023 | THURSDAY 6/15
11:05 - 11:55

PRESENTER: DR. AMANDA LANIER
MAFLT PROGRAM DIRECTOR
MICHIGAN STATE UNIVERSITY



PRESENTER

Dr. Amanda Lanier

<https://maflt.cal.msu.edu/amanda-lanier>

<https://lanier.commons.msu.edu>



Want to connect?

My Virtual Assistant can help!



Powered by ALI (Amanda's limited intelligence) not AI. ;)



Session Synopsis

One of the most frequent refrains in conversations among language teachers today is that they feel deeply isolated in their efforts to teach effectively. In the wake of emergency remote teaching and learning (ERTL), their skills have grown in using educational technology themselves, and they may have increased their engagement in social media and virtual events, but are they tapping into the potential of technology to reduce isolation and contribute to their growth as educators?

As Cope and Kalantzis (2017) have famously stated, technology in and of itself will not transform education. However, collaborative tools, platforms, and apps now available, and teachers' increasing familiarity with them, can open up new affordances for distance-based networks. The challenge lies in mobilizing those networks to actually meet teachers' needs.

This presentation will begin by using case studies to demonstrate both the isolation these teachers feel and the needs that they hope a digital network might meet. Rather than emphasizing particular tech tools, we will then discuss strategies successfully implemented in and through a large online graduate program for language teachers to build community, as well as emerging practices and materials that will help these teachers to bring their learning into their own local contexts and teams.

www.pollev.com/alanier321

Join by Web



- 1 Go to **PollEv.com**
- 2 Enter **ALANIER321**
- 3 Respond to activity

OR

Join by Text



During F2F session only!

OR

Download the PollEv app

Powered by  **Poll Everywhere**

PollEverywhere

- 1 Go to **PollEv.com**
 - 2 Enter **ALANIER321**
 - 3 Respond to activity
-
- 1 Text **ALANIER321** to **37607**
 - 2 Text in your message



Introduce Yourself!

PollEv > Name and Location

[Tinyurl.com/connect2maflt](https://tinyurl.com/connect2maflt)

Name & Location | tinyurl.com/connect2maflt

“ Nuevo Orleans ”

“ Universidad Pedagógica Nacional ”

“ New Orleans ”

“ Northwestern University ”

“ Ingrid Onelike Al ”

True or False?



Emergency remote learning and teaching is over and behind us.

Teachers and students and language programs are back to normal.

Online learning is inherently isolating.

Language courses are more effective when the students build rapport and even see themselves as a community.

Connecting with a community of peers is essential to sustaining the work of language teachers.



Virtual Networks seem... Virtual

DR. AMANDA LANIER | MAFLT.CAL.MSU.EDU/AMANDA-LANIER



**KEEP
CALM
AND
KEEP
LEARNING
ONLINE**

MASTERS IN
**FOREIGN LANGUAGE TEACHING
ONLINE**

maflt.cal.msu.edu

A dark green rectangular graphic with a white Spartan helmet logo at the top. Below the logo, the text "KEEP CALM AND KEEP LEARNING ONLINE" is written in large, bold, white capital letters. At the bottom, a white box contains the text "MASTERS IN FOREIGN LANGUAGE TEACHING ONLINE" in black, with "FOREIGN LANGUAGE TEACHING" in bold. Below this box, a purple bar contains the website address "maflt.cal.msu.edu" in white.

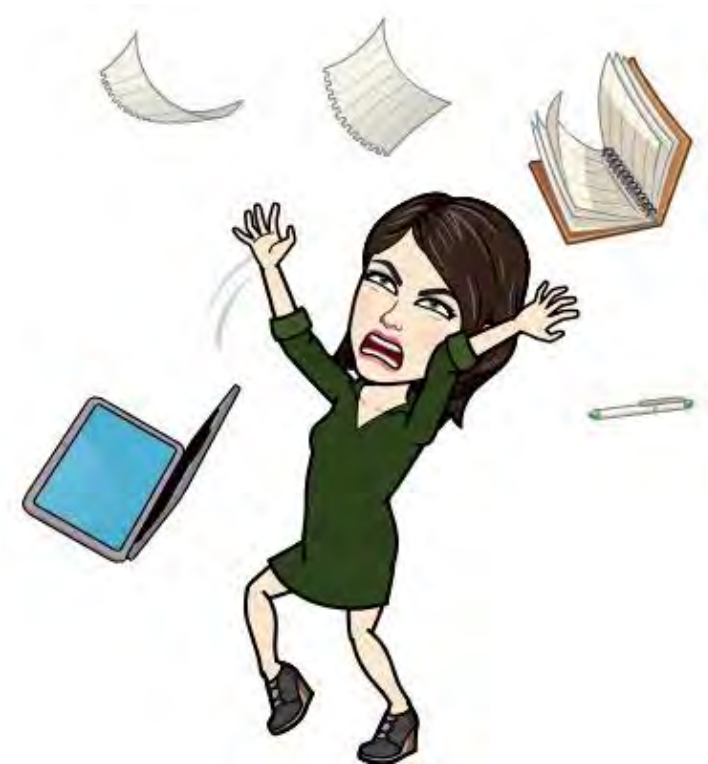


You remember it well...

“Guess what? Now you get to teach from home! On a computer!”



Keep
CALM?



If you had to sum up your experience with online learning
in one phrase like a hashtag, what would it be?

“ #somanyscreens ”

“ #solittletime ”

Powered by  Poll Everywhere

https://PollEv.com/free_text_polls/Ahl85Lu9GJEWpxhh76qBc/respond

How do you connect with other language educators?

IT'S NOT WHAT YOU USE, IT'S HOW YOU USE IT.





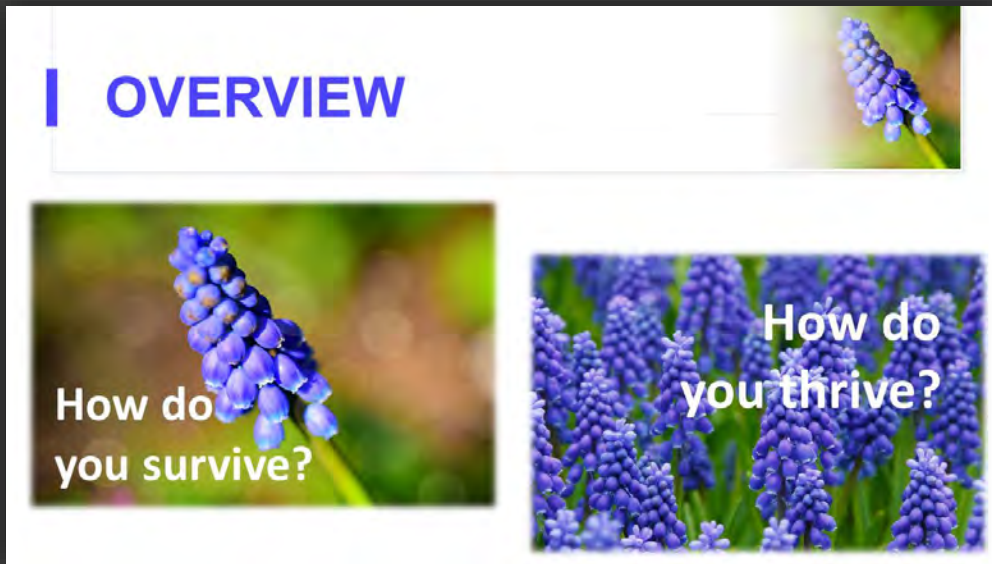
Teacher Isolation is Real

DR. AMANDA LANIER | [MAFLT.CAL.MSU.EDU/AMANDA-LANIER](https://maflt.cal.msu.edu/amanda-lanier)

Department of One: How Isolated Teachers Connect and Collaborate

Presentation at CSCTFL 2022

With Jaime Danks
(Spanish teacher in Minnesota)



sites.google.com/msu.edu/department-of-one-csctfl2022



Make virtual community a reality: Strategies for teacher networking

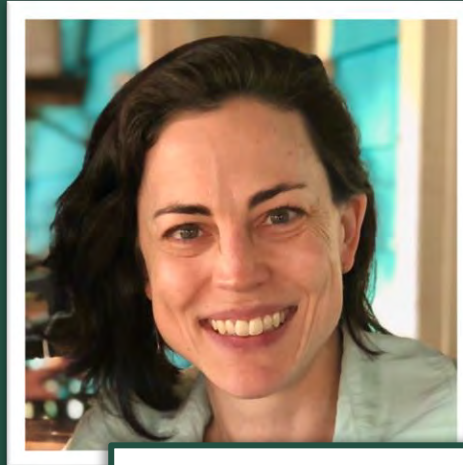
Presentation at MIWLA 2022

With Betty Brown, Teryn Henderson, and
Tammy Schmidt

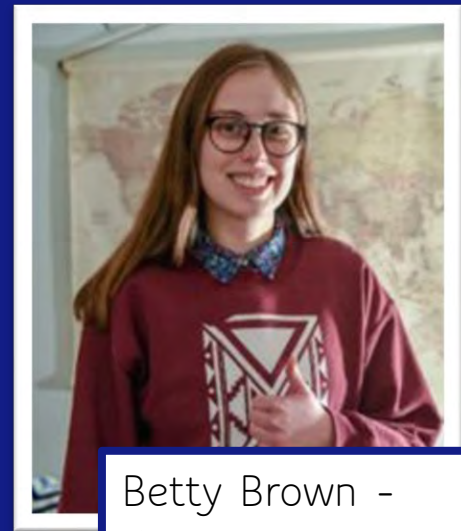
<https://maflt.cal.msu.edu/pd-posts/2022/miwla2022-make-virtual-community-reality/>

REAL + VIRTUAL PRESENTERS

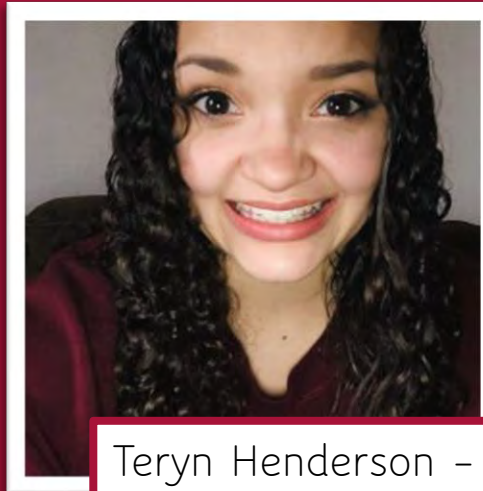
MIWLA 2022



Dr. Amanda Lanier -
linktr.ee/LanierLingvista



Betty Brown -
brown914@msu.edu



Teryn Henderson -
hende353@msu.edu

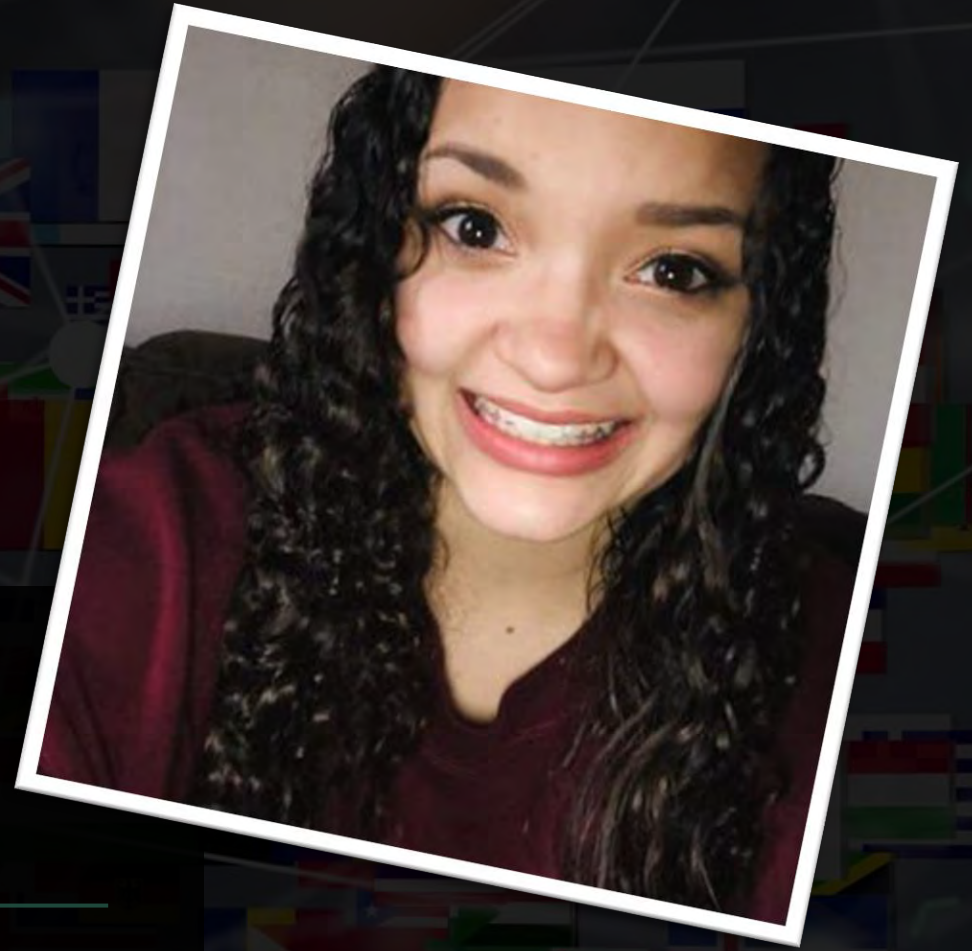


Tammy Schmidt -
profe.tschmidt@gmail.com

BETTY BROWN

Teaching Japanese since 2018 | Started the MAFLT in 2019





TERYN HENDERSON

Teaching Spanish since 2018 | Started the MAFLT in 2020



TAMMY SCHMIDT

Teaching Spanish since 2005 | Started the MAFLT in 2017

AN SAKACH

Teaching Vietnamese online from Arizona | ViVID Fellow 2022-23





AYMAN MOHAMED

Teaching Arabic at Michigan State | ViVID Fellow 2022-23

If I didn't have my grad school community...

"I've been burned out on virtual meetings and things like that"

"I'm not really a social media person"

"I think I would have been out of the language classroom sooner than I already was"

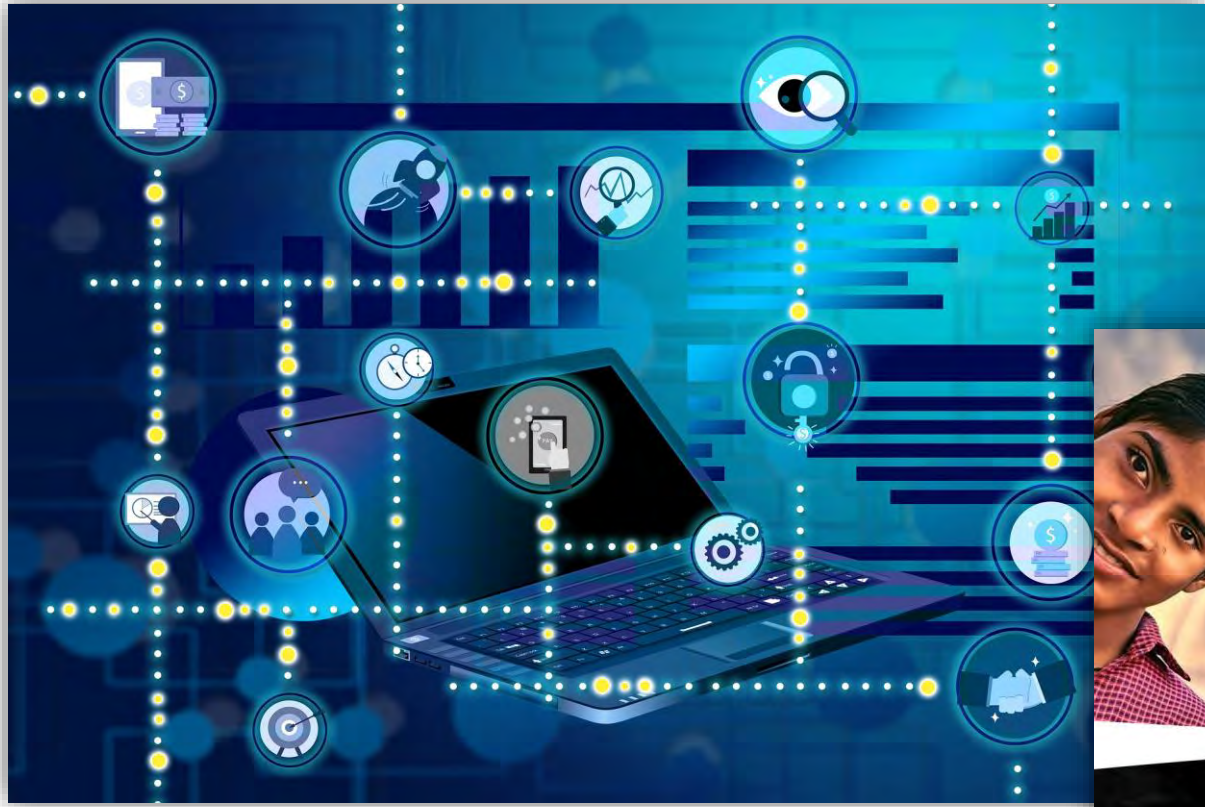
"You would think I would have hit some instance where I felt like, "Wow, I put my ideas out there and I just got hammered"

"How do we [alumni] all connect with each other? If we've lost touch?"



Connection is Essential

DR. AMANDA LANIER | MAFLT.CAL.MSU.EDU/AMANDA-LANIER



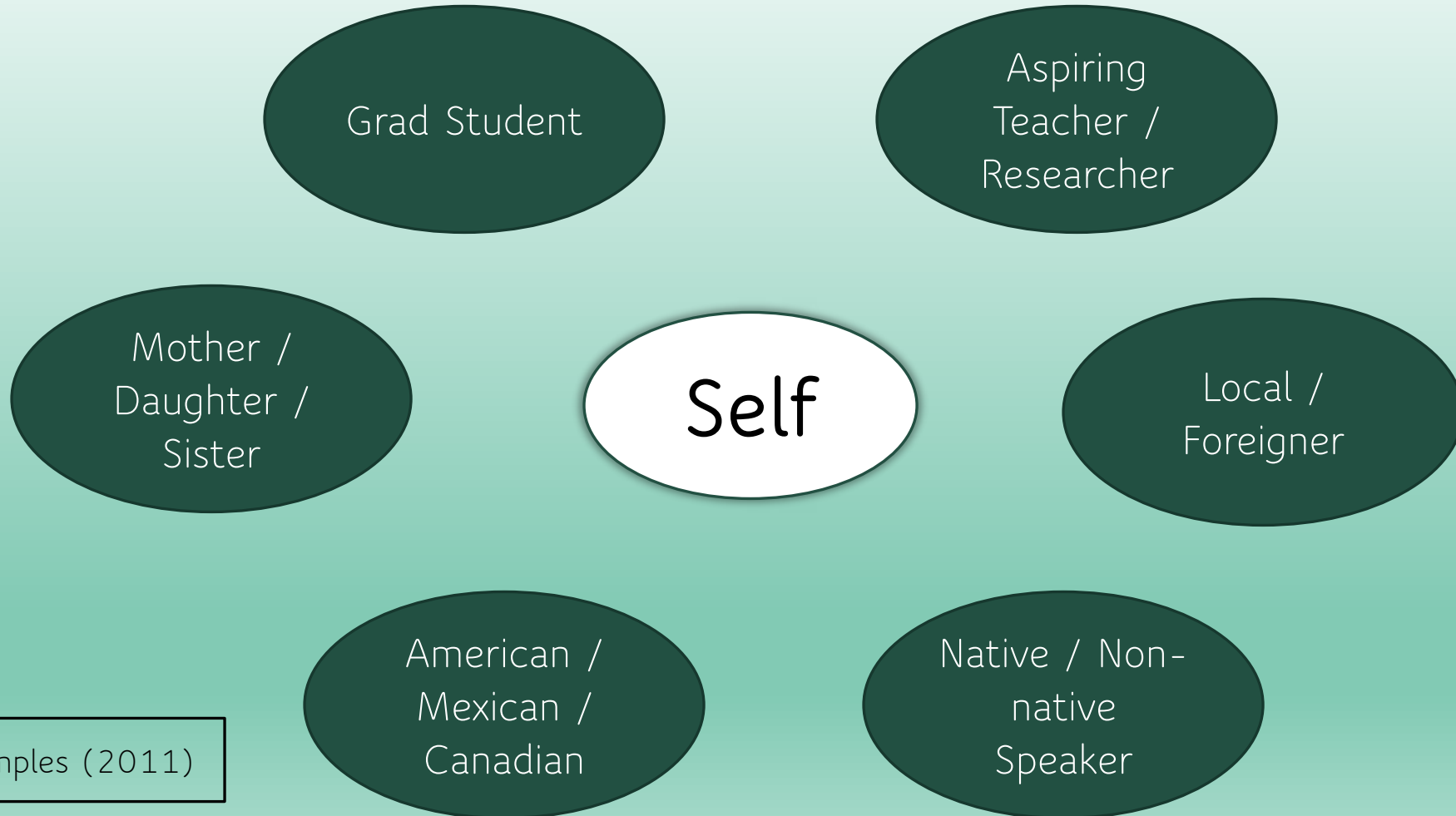
Digital Networks



Human Networks

Identity and Community

What identities are relevant for you?

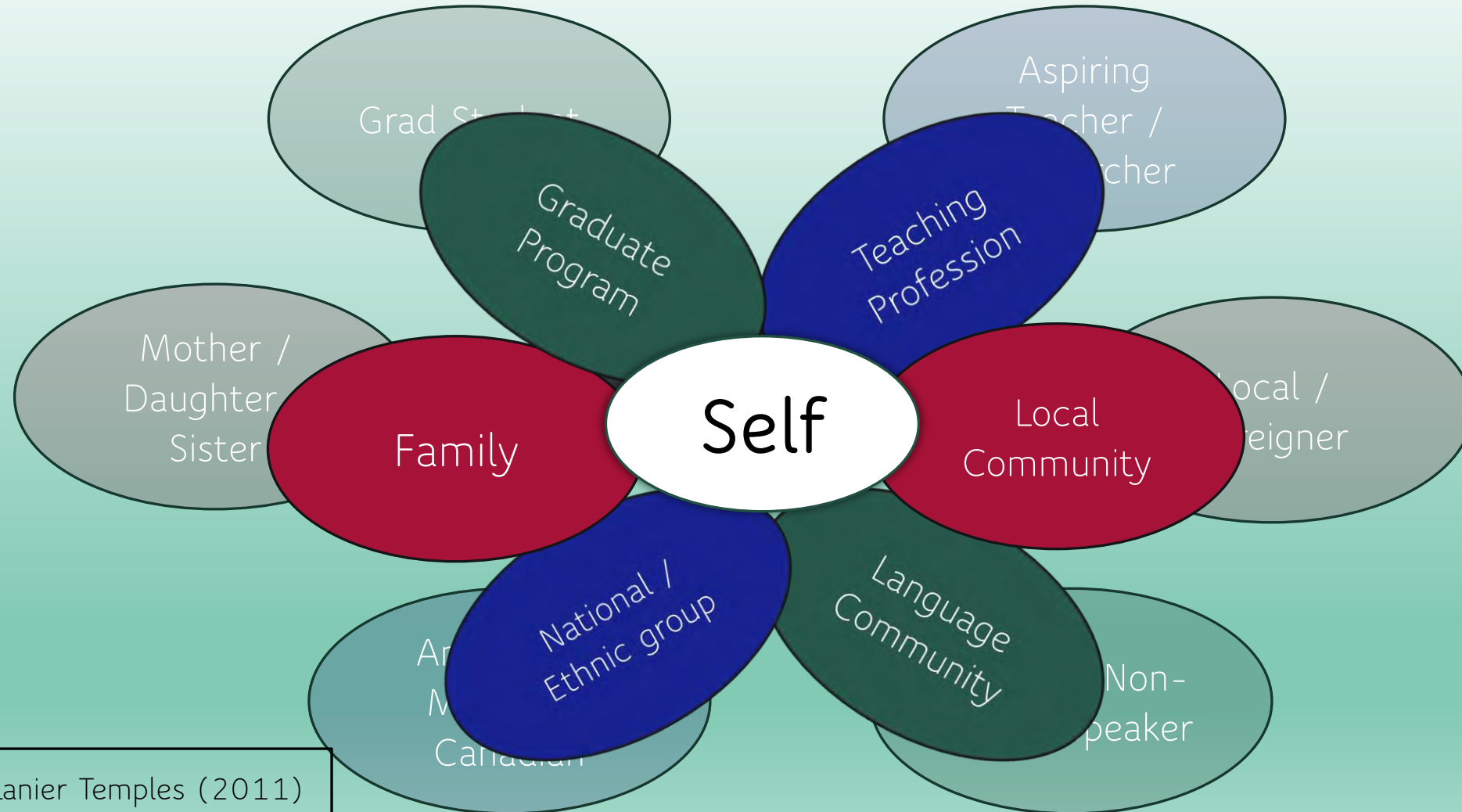


Nelson & Lanier Temples (2011)

Identity and Community

Nexus of Multimembership

Each of those identities is really a membership in a community – they intersect to make you YOU



Nelson & Lanier Temples (2011)

Situated Learning – “the apprenticeship model”

Learning is socially negotiated



Learning is a process of identity construction



Learning involves the whole person in relation to specific activities and social communities



(Lave & Wenger, 1991)

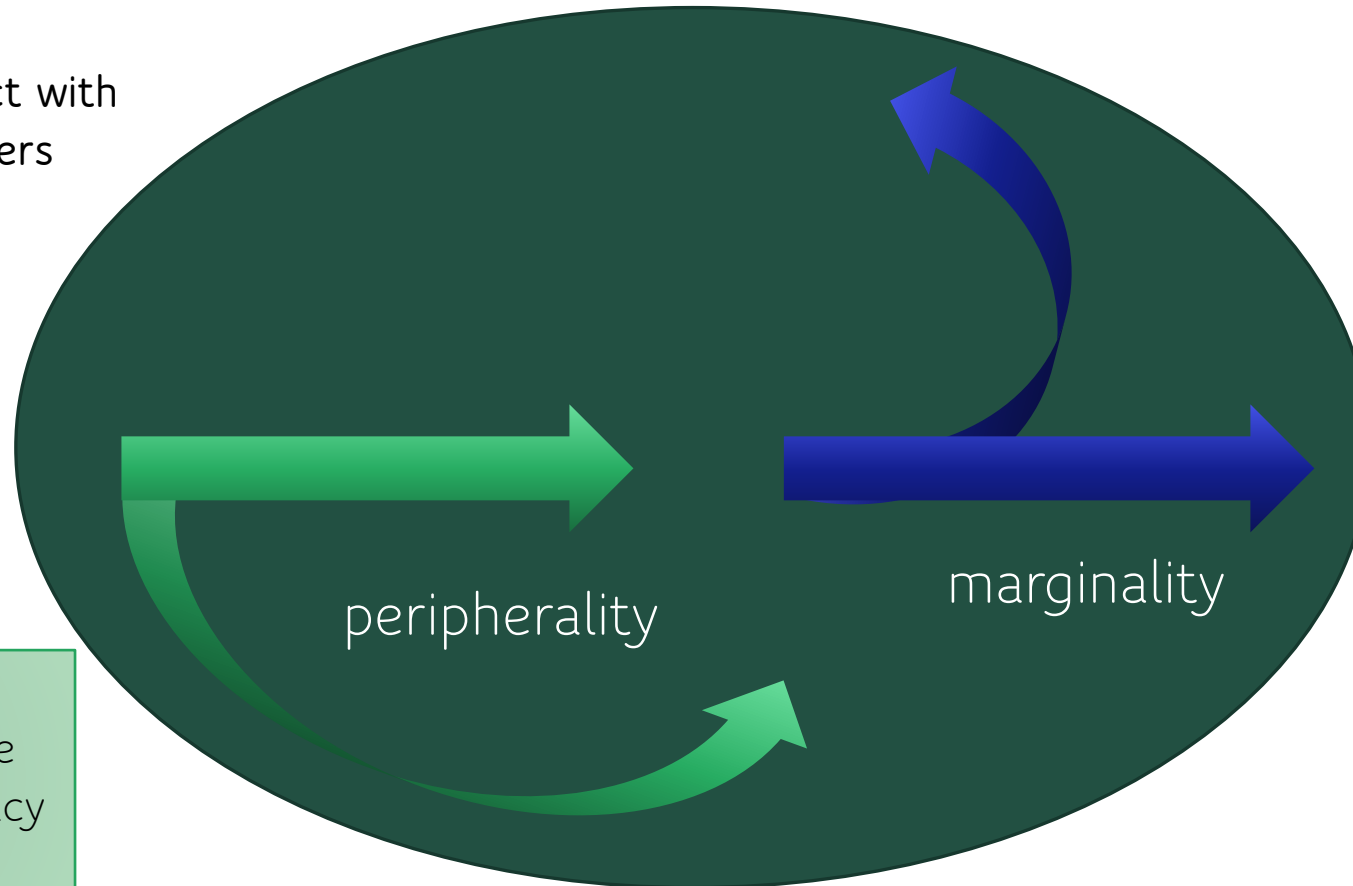
Learning in Communities of Practice

Legitimate peripheral participation (LPP)

(Wenger, 1998)

Newcomers interact with experienced members

Learning is gradual, purposeful, active, and social



Peripherality

Learners gain expertise and negotiate legitimacy

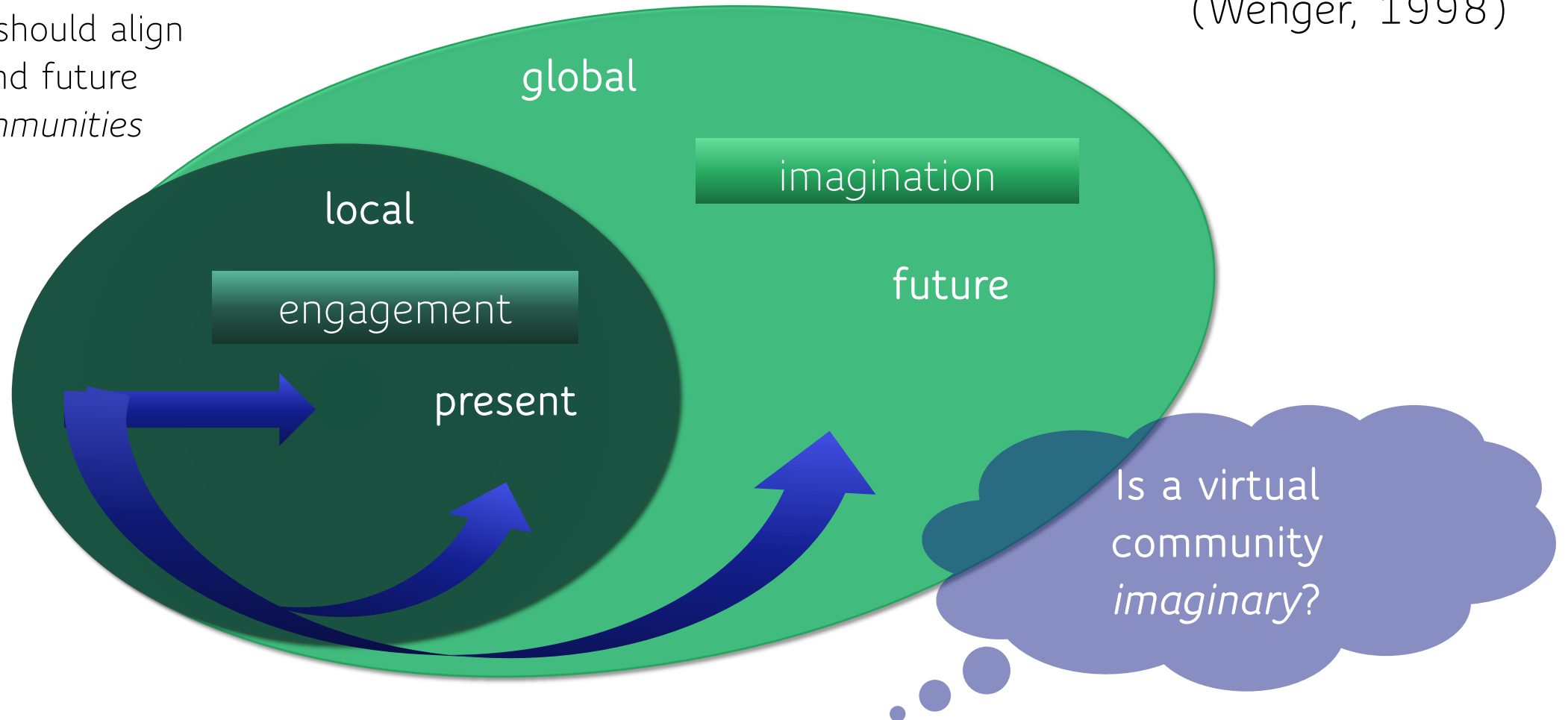
Marginalization -

no legitimacy →
no inward trajectory →
limited learning

Virtual Community, Real Learning

Local and present
engagement should align
with global and future
imagined communities

(Wenger, 1998)



Connection is Essential

Contact with another person is a basic biological need; loneliness is a form of starvation. Even as adults, connection nourishes us in a literal, physiological way... We literally sicken and die without connection...

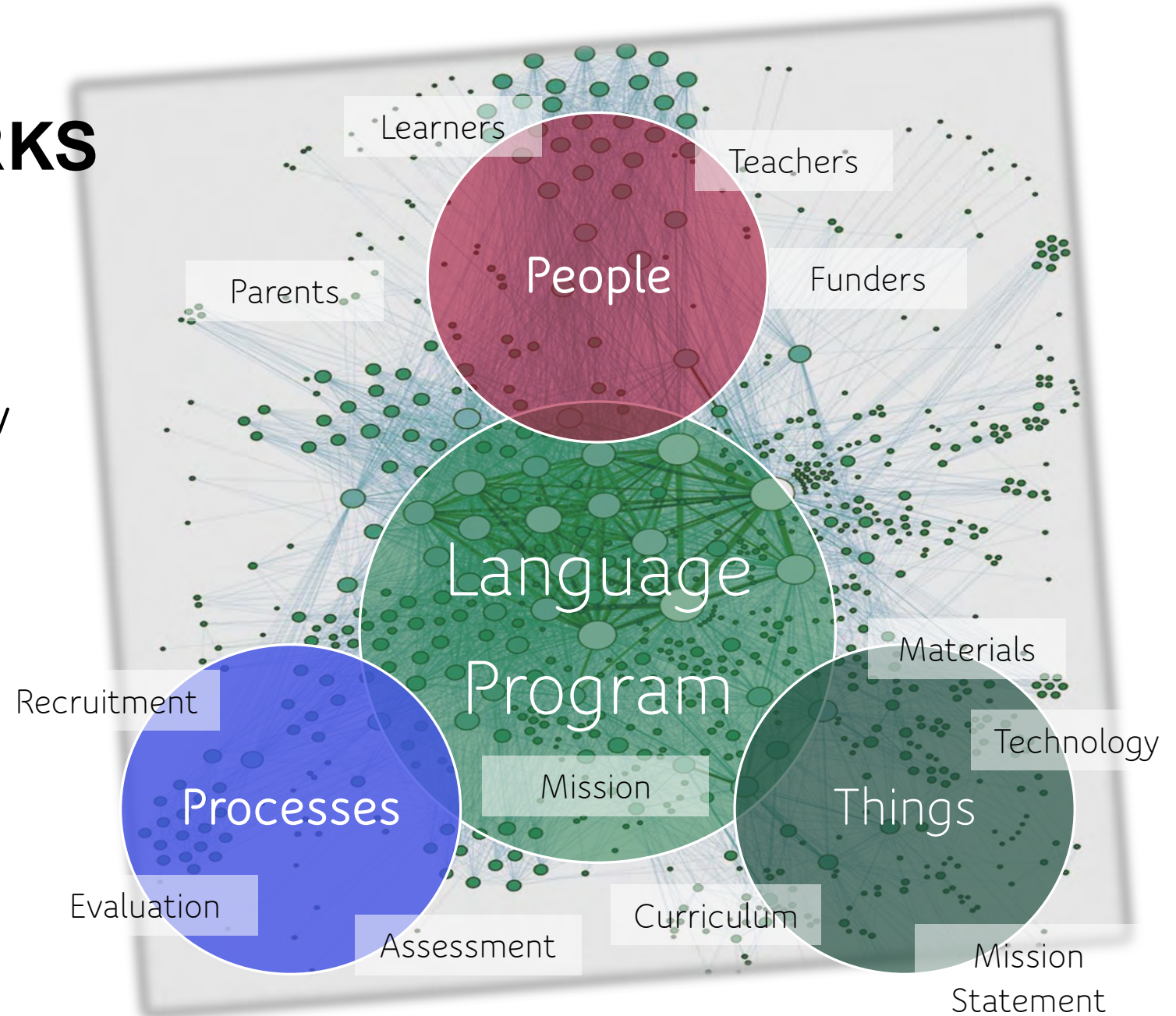
And it is also true that the lifelong development of autonomy is as innate to human nature as the drive to connect. We need both connection and autonomy.

From *Burnout: The Secret to Unlocking the Stress Cycle*
(Nagoski & Nagoski, 2019, p. 134-135)

LOCAL NETWORKS

Language Program Ecology

- People, Processes, Things
- Tangible and Intangible elements
- Internal participants
- External stakeholders





Virtual Communities Can Be Real Solutions

DR. AMANDA LANIER | MAFLT.CAL.MSU.EDU/AMANDA-LANIER

Why do you need a network beyond your local context?

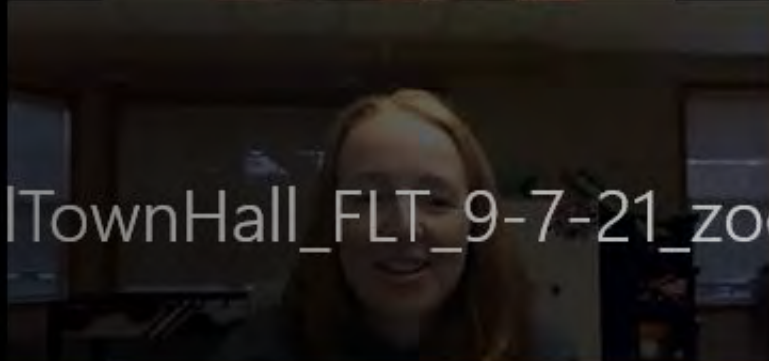
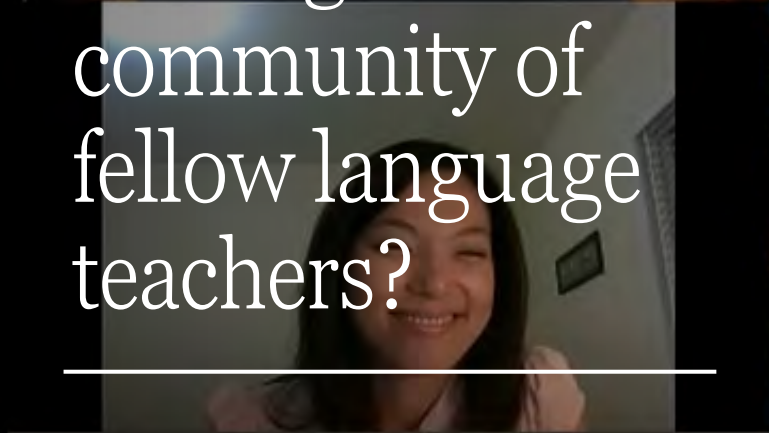
Top



Powered by  Poll Everywhere



What are you looking for in a community of fellow language teachers?



FallTownHall_FLT_9-7-21_zoom

What are you looking for in a community of fellow language teachers?



A safe space to share my ideas

People who are facing the same problems that I am

People who want to grow as much as I do

Examples and advice when I want to innovate

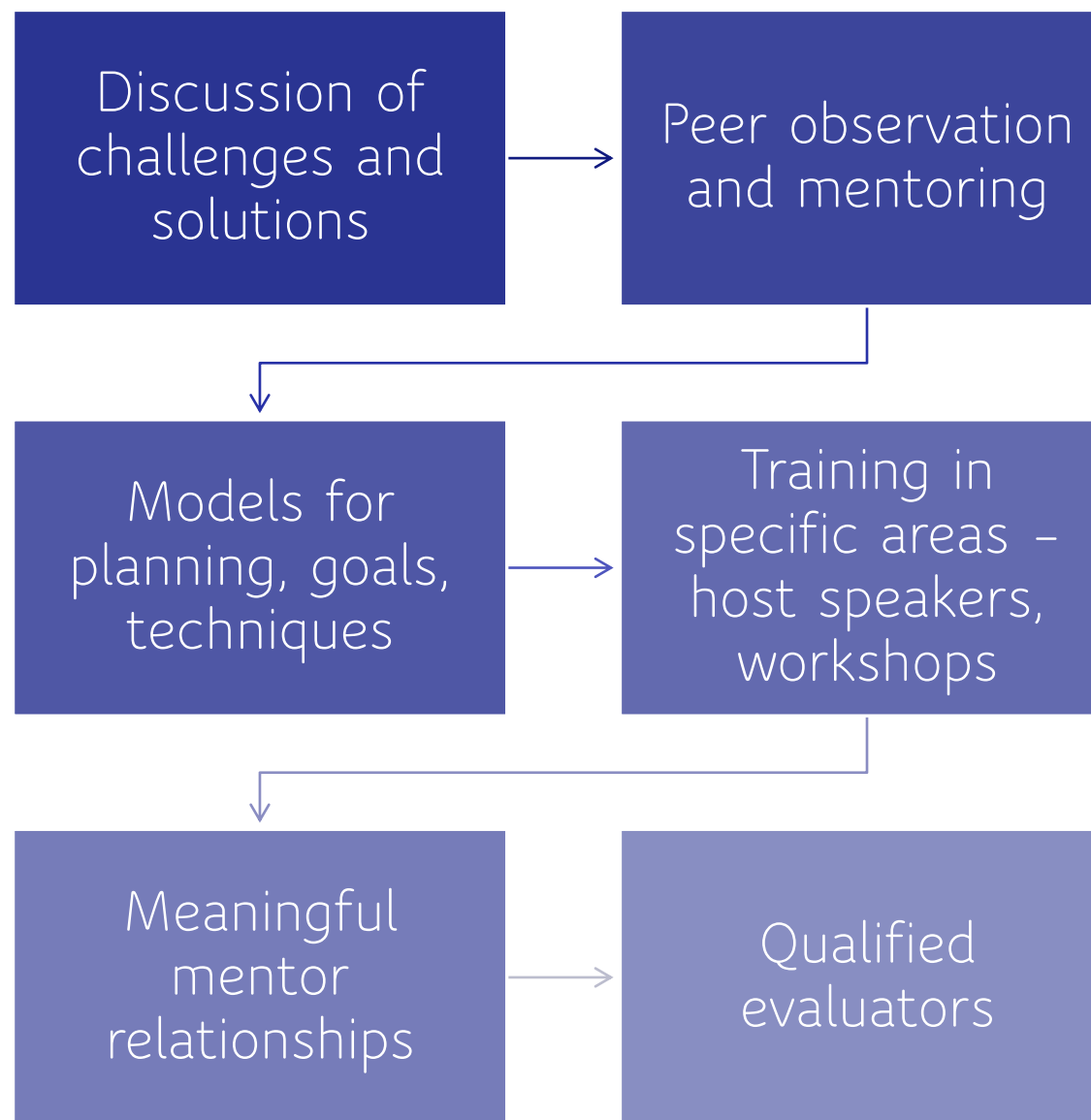
People who care about me as an individual, my current struggles and my potential

People who respect what I am trying to do and say, even when I am learning and going out on a limb

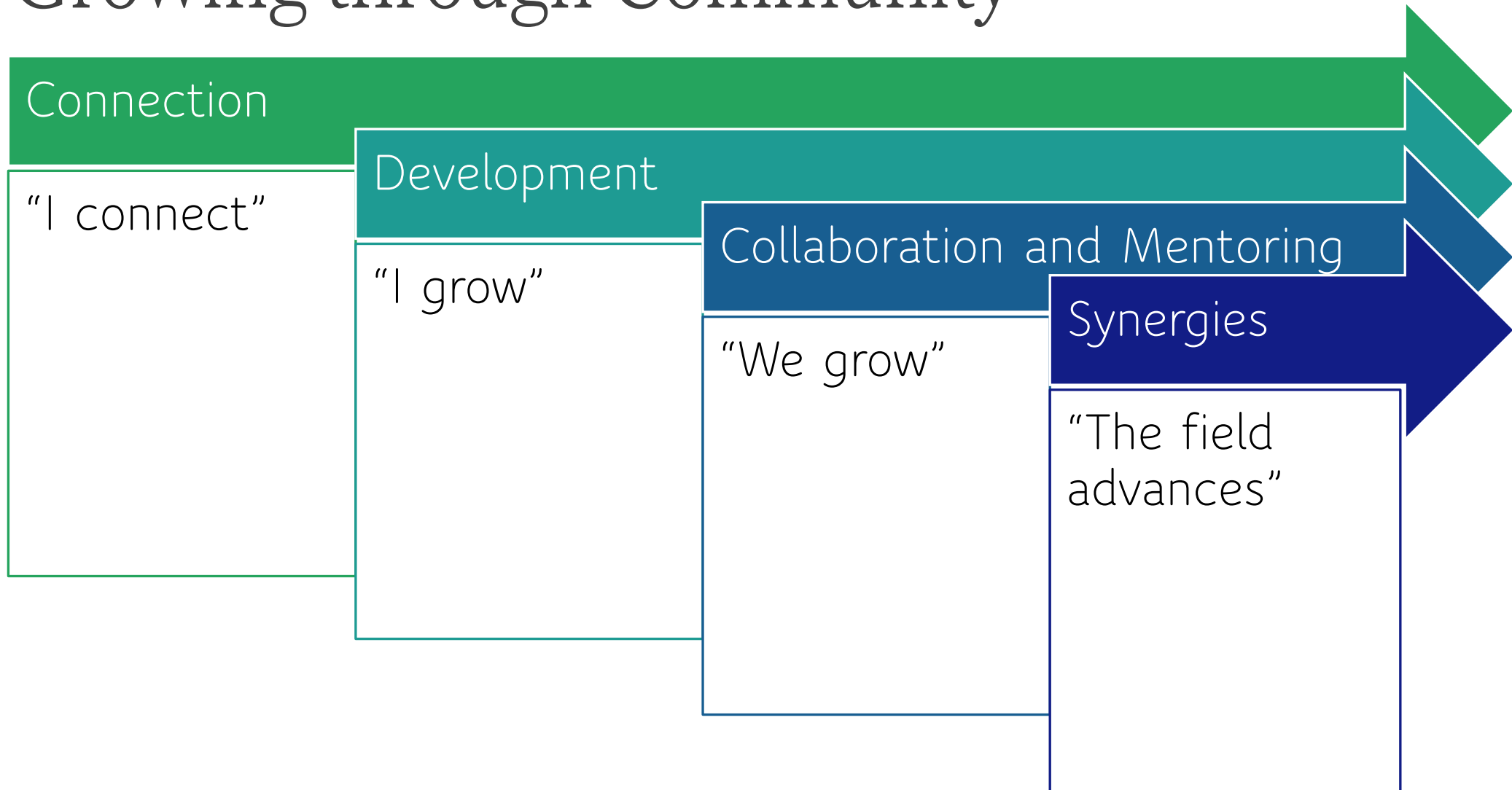
Peer Networks

What do you actually want and need from the peer network?

- *Not just joining an online group*
- *Not just sharing materials*
- *Not just forming a PLC*



Growing through Community



My Virtual Communities

MAFLT Network

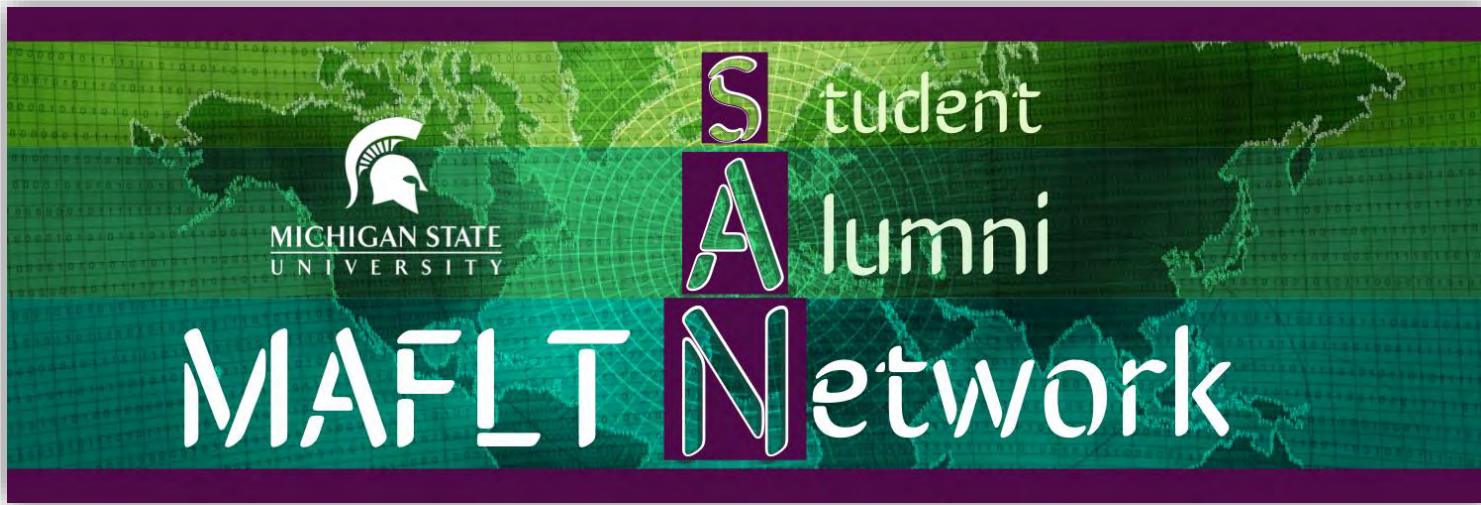
maflt.cal.msu.edu/students

VIVID Fellows

nlrc.msu.edu/vivid-project

Michigan State University





MAFLT in a Nutshell

- Fully online since 2012
- Certificate option since 2021
- Asynchronous courses
- Culminates with master's project and online portfolio

maflt.cal.msu.edu/alumni

- Experienced language teachers, before, during, and after the program
- Almost 100 alumni
- About 50 current students
- 20 target languages
- Living in 40+ U.S. states
- From 20+ different countries
- Teaching in almost every possible context of world language ed



WE EMPOWER LANGUAGE EDUCATORS



EARLY CAREER aspiring educator

You have a long history as a language learner, a traveler, and an explorer of new ideas as well as new locations. You want to inspire others to become multilingual citizens of the world. First, you want to enhance your skills and credentials and connect with a network of educators who can inspire you.

[Meet Current Students](#)



LEVELING UP experienced instructor

You are well-versed the life of the classroom and the challenges of engaging language learners. Now you are ready to focus on enhancing your skills as you focus on effective methods, intercultural awareness, and innovative technology. You want to explore, create, and set a trajectory for growth.



TEACHER LEADER innovator and influencer

You know that language learning and language teaching can take many different forms, and you want to contribute to transforming the field. Whether you want to guide fellow educators, create innovative materials, or explore research, you are looking for courses that connect theory to practice.

[Meet Our Alumni](#)

<https://maflt.cal.msu.edu>

DR. AMANDA LANIER | [MAFLT.CAL.MSU.EDU/AMANDA-LANIER](https://maflt.cal.msu.edu/amanda-lanier)



[Nlrc.msu.edu/vivid](http://nlrc.msu.edu/vivid)

Virtual ▶ Community Video-Based Inquiry Instructor Development

Comparison with Other Languages

Less-Commonly Taught Languages

Chinese

Japanese

Italian

Russian

Arabic

Latin

Portuguese

Korean

Hindi/Urdu

Indonesian

French

German

And many more!

Expanding LCTL Teachers through ViVID | NCOLCTL 2023 | Lanier, Sommer-Farias, & Poole



Nlrc.msu.edu/vivid

Virtual
▶ **Community**
Video-Based
Inquiry Instructor
Development

ViVID

Implications for the LCTL Instructors

Needs we aimed to meet:

Lack of Relevant PD

Lack of Supervision and Feedback

Lack of Time, Distance Apart

Wide Range of Prior Training and Contexts

And of course... Multilingual

HOW?

Peer
Observation

Virtual
Participation

Video
Annotation

Expanding LCTL Teachers through ViVID | NCOLCTL 2023 | Lanier, Sommer-Farias, & Poole

16

Michigan State University

**MASTER OF ARTS
FLT
AND CERTIFICATE**

MAFLT.CAL.MSU.EDU

MAFLT Meetups



Virtual events... Real connections.

Join us in GatherTown

NEW THEME

Let the **PLAY** Go On!

Meet up in a playful space to talk about bringing music, drama, visual art, popular games, and your own interests into your language learning and teaching.

Subscribe for Updates

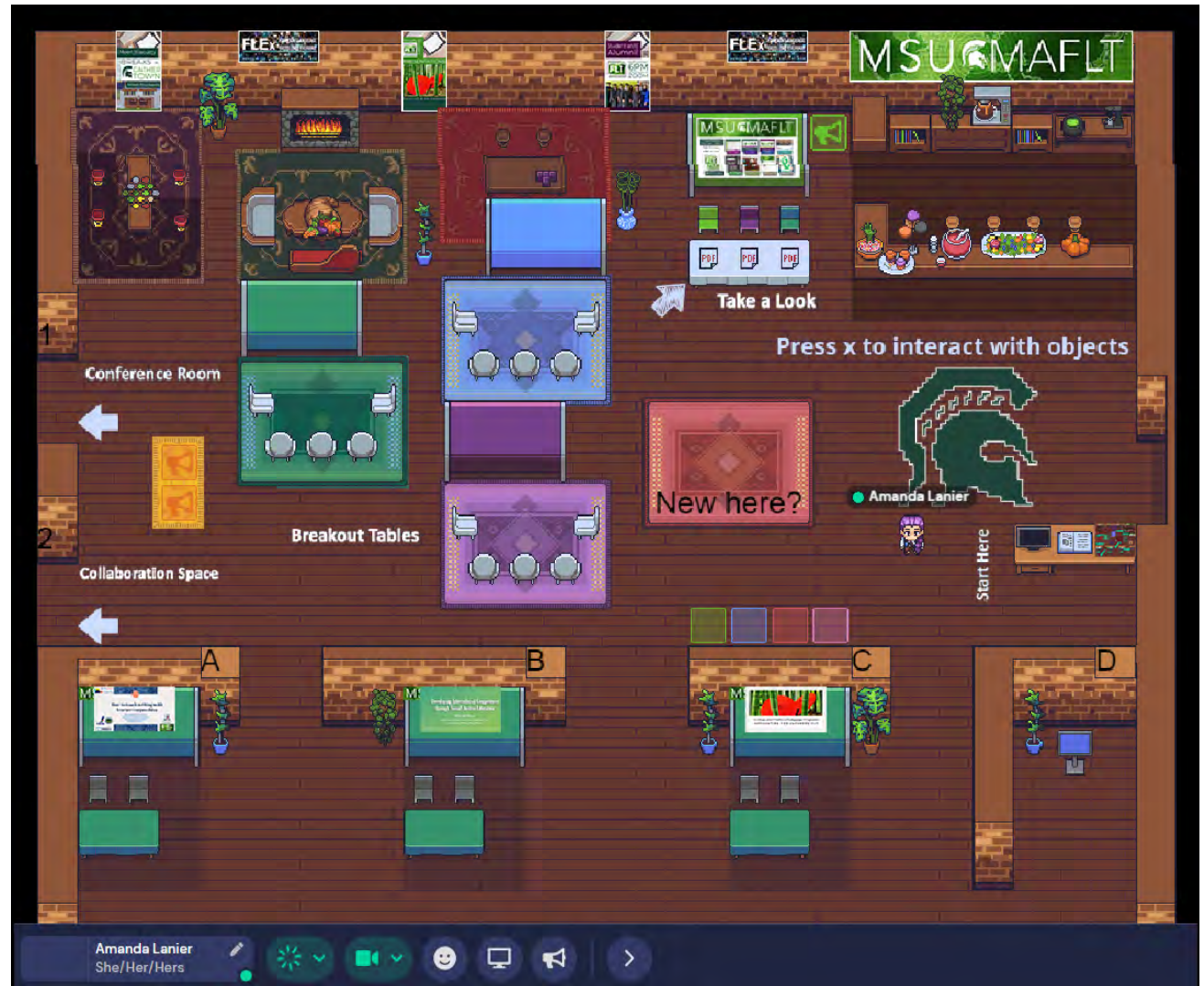


Click or Scan

Spring 2023

Last Thursday each month
7 pm Eastern

- January 26
- February 23
- March 30
- April 27
- May 25 (TBD)



<https://maflt.cal.msu.edu/maflt-events/>

Online Community Essentials

Forming professional community in an online space depends upon a **shared foundation of concepts and practices, well-structured protocols** that support interaction and reflection, a certain level of **consistent commitment** to the community, and **building rapport** through both **mandated and casual** interactions over time (Knight, 2020).

Building Community

> Student
Responsibilities



Participate

- Play an active role
- Discussion Posts
- Events

Emotional Presence

- Be yourself
- You get out what you put in

Find Your People

- Same Language
- Similar Interests
- Other departments of one

Building Community

> Instructor Role

Course Home Content Discussions Quizzes Assignments Grades Classlist Teams 845

FLT-845-730 - Language Concepts for FLT - Dr. Sommer-Farias
FS22

Module 5

Syntax and Grammar Learning



I was unsure about what meme to use to illustrate syntactic features this week, so I am sharing two. If you are a fan of Star Wars movies, you may know that Yoda (the character in the meme above) is well known for his particular sentence structure. Since the Fall semester is flying by and work is piling up, I also felt that the meme the opens up this Module would be appropriate to illustrate our feelings. Both sentence structure and verb tenses fall under what we call Syntax. Or would it be simply grammar?



Creating and
maintaining the
virtual space



Setting and
modeling
expectations



Intentional
authentic
interaction



Scaffolding and
Student Support



Emotional
Presence

Virtual Networking - Recommend Apps or Platforms?

Top

- | 0 | Humanities Commons (hcommons.org)
- | 0 | Catalyst
- | 0 | Slack
- | 0 | LinkedIn
- | 0 | Twitter
- | 0 | Facebook

What resonated
with you?

What didn't?

What would help
you feel more
connected?

THANK YOU


Connect with us in person or online!

@MSU_MAFLT

LinkedIn Group

YouTube Channel



 linktr.ee/lanierlingvista

REFERENCES – Virtual Communities

- Cope, B. & Kalantzis, M. (Eds.) (2017). *E-learning ecologies: Principles for new learning and assessment*. New York: Routledge.
- Garrison, D. R., Anderson, T., & Archer, W. (2001). Critical thinking, cognitive presence, and computer conferencing in distance education. *American Journal of Distance Education*, 15(1), 7-23.
- Lanier Temples, A., & Nelson, G. (2013). Intercultural computer-mediated communication: Insights from corpus-based analysis. In D. D. Belcher & G. Nelson (Eds.), *Critical and corpus-based approaches to intercultural rhetoric* (pp. 154-179). Ann Arbor, MI: University of Michigan Press.
- Lave, J., & Wenger, E. (1991). *Situated learning: Legitimate peripheral participation*. Cambridge: Cambridge University Press.
- McDonald, J., & Cater-Steel, A. (Eds.). (2017). *Communities of practice: Facilitating social learning in higher education*. Singapore: Springer.
- Mercieca, B. (2017). What is a community of practice? In McDonald, J., and Cater-Steel, A. (Eds.), *Communities of practice: Facilitating social learning in higher education* (p. 3-25). Singapore: Springer.
- Nelson, G., & Lanier Temples, A. (2011). Identity construction as nexus of multimembership: Attempts at reconciliation through an online intercultural communication course. *Journal of Language, Identity, and Education*, 10(2), 63-82.
- Shea, P., Hayes, S., Vickers, J., Gozza-Cohen, M., Uzuner, S., Mehta, R., ... Rangan, P. (2010). A re-examination of the community of inquiry framework: Social network and content analysis. *The Internet and Higher Education*, 13(1-2), 10-21.
- Walther, J. B. (1997). Group and interpersonal effects in international computer-mediated collaboration. *Human Communication Research*, 23(3), 342-369.
- Wenger, E. (1998). *Communities of practice: Learning, meaning, and identity*. Cambridge: Cambridge University Press.

REFERENCES – Teacher Development

- ACTFL. (2019). *Educators rising 2.0*. Retrieved from: <https://www.actfl.org/advocacy/educators-rising>
- ACTFL. (2022). *Guiding principles for language learning*. Retrieved from: <https://www.actfl.org/resources/guiding-principles-language-learning>
- Allen, L.Q. (2018). Teacher leadership and the advancement of teacher agency. *Foreign Language Annals*, 51, 240-250.
- Darling-Hammond, L. (2013). When teachers support & evaluate their peers. *Educational Leadership*, 71(2), 24-29.
- Commission on Language Learning. (2017). *America's languages: Investing in language education for the 21st century*. American Academy of Arts & Sciences. Retrieved from: <https://www.amacad.org/publication/americas-languages>.
- Martel, J. (2015). Learning to Teach a Foreign Language: Identity Negotiation and Conceptualizations of Pedagogical Progress. *Foreign Language Annals*, 48(3), 394-412.
- Pennington, M. & Hoekje, B. (2010). *Language program leadership in a changing world: An ecological approach*. Emerald Group Publishing Limited.
- Johnson, K.E. (2015). Reclaiming the relevance of L2 teacher education. *Modern Language Journal*, 99(3), 515-528.
- Nieto, S. (2015). *Why we teach now*. Teachers College Press.
- Richards, J. C., & Lockhart, C. (1996). *Reflective teaching in second language classrooms*. Cambridge University Press.
- Ritz, C. (2021). *Leading your world language program: Strategies for design and supervision, even if you don't speak the language!* Routledge.
- Tedick, D. J. (2005). *Second language teacher education: International perspectives*. Lawrence Erlbaum.
- TELL Project. (2014). *Teacher effectiveness for language learning framework*. Retrieved from: <https://www.tellproject.org/framework>.

SLIDES FROM MAFLT PROGRAM ORIENTATION

How we use our various platforms and
how to “do school” in our graduate program



ONLINE GRADUATE PROGRAMS IN FOREIGN LANGUAGE TEACHING

MASTER OF ARTS

Virtual learning
environment

Real world
relevance



AND CERTIFICATE

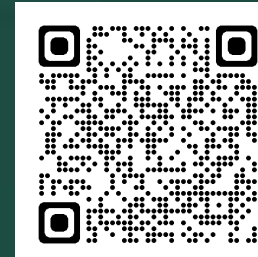


MICHIGAN STATE
UNIVERSITY

ONLINE GRADUATE PROGRAMS



FOREIGN LANGUAGE TEACHING



Request Info
Prospective Students



Subscribe
Program News List

Virtual learning environment. Real world relevance.

➤ **MAFLT Events**

➤ **Careers in FLT**

You can use your phone's camera to scan QR codes.



Request Info
Prospective Students



Subscribe
Program News List

MASTER OF ARTS IN FOREIGN LANGUAGE TEACHING

ORIENTATION – FALL 2022



**CENTER FOR LANGUAGE TEACHING ADVANCEMENT
MICHIGAN STATE UNIVERSITY
EAST LANSING & EVERYWHERE YOU ARE!**



FIRST THINGS FIRST...



You are now a Spartan!

Welcome to the
MAFLT Program!



**MASTERS IN
FOREIGN
LANGUAGE
TEACHING
ONLINE**

MICHIGAN STATE
UNIVERSITY

maflt.cal.msu.edu

You are
now a
Spartan!





IN THIS PRESENTATION:

- People in the program
- Structure of the program
- Many trajectories
- Experiential modules
- Final portfolio
- Learning management system
- Resources
- Advice
- Next steps





MAFLT FACULTY HISTORY

2012

Founded by:

Susan Gass
David Prestel
Pat Paulsell

2013

Director:

Paula Winke

New Faculty:

Dustin De Felice
Amanda Lanier

2016

Director:

Dustin De Felice

Faculty:

Amanda Lanier

2018

Director:

Amanda Lanier

2019-20:
HaiXia Liu

2020

New Faculty:

Frederick Poole
Bruna Sommer-Farias

Other Instructors:

- Rajiv Ranjan
- Luca Giupponi
- Aaron Ohlrogge
- Shannon Quinn

MEET YOUR INSTRUCTORS AND MENTORS



Dr. Amanda Lanier
MAFLT DIRECTOR



Dr. Frederick Poole
MAFLT CORE FACULTY



Dr. Bruna Sommer-Farias
MAFLT CORE FACULTY



OUR STUDENTS





MAFLT BY THE NUMBERS

100 Almost 100 Alumni since 2012

and

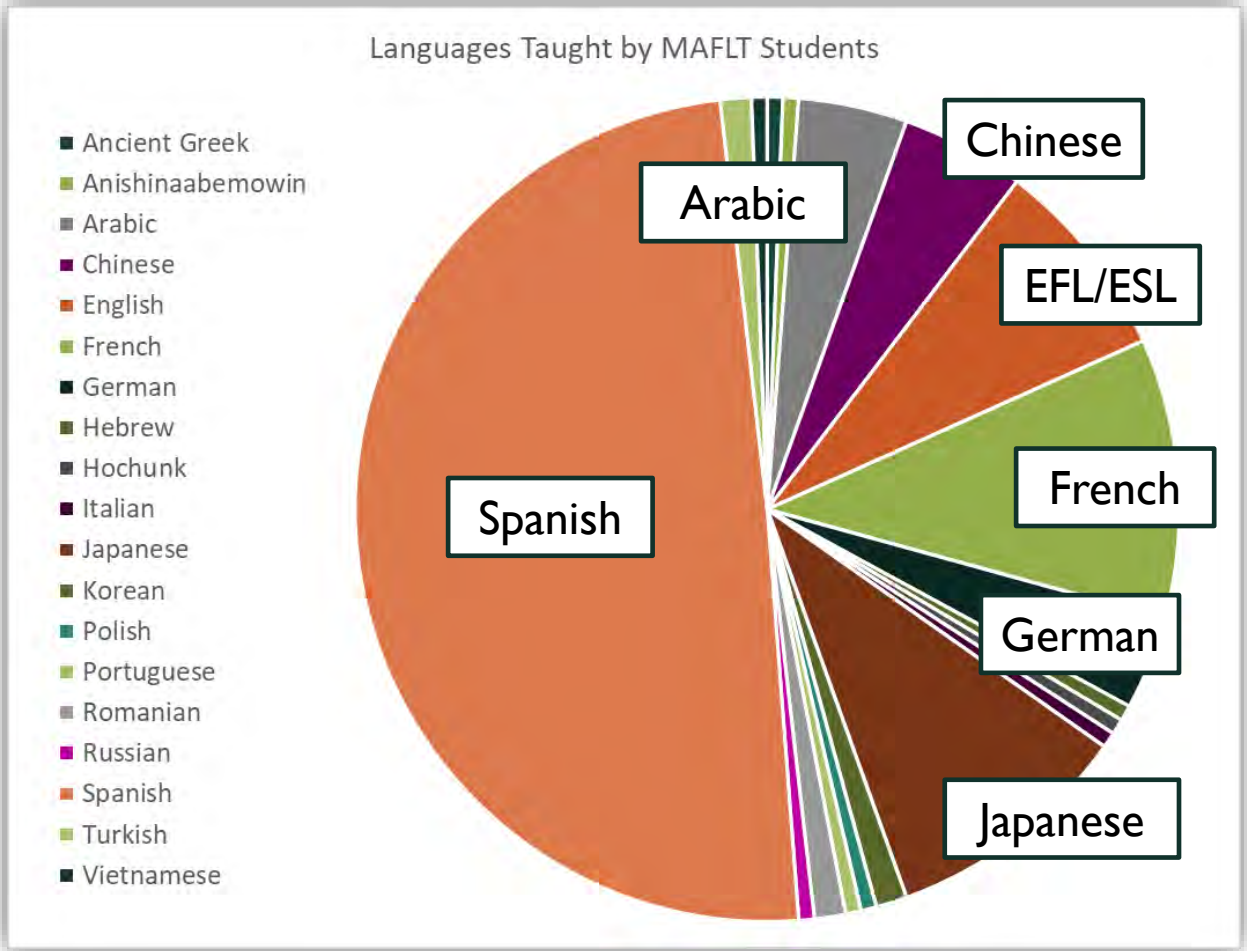
50 About 50 Current Teachers WHO TEACH AND SPEAK

20 Over 20 Languages AND COME FROM

40 Most U.S. States

AND

25 25 Home Countries





ONLINE BY INTENTION

MAFLT @ MSU

Innovative

- Current methods and approaches in FLT
- Technology infused throughout
- Assignments can be applied immediately to classroom

Interactive

- Courses are asynchronous but not canned
- Interact through discussions, group work, virtual meetings
- Reach instructors via Teams, email, Zoom, etc.

International

- Connect with peers around the world
- Learn from fellow teachers of many different languages
- Work in the time zone that works for you



PROGRAM REQUIREMENTS

MA in Foreign Language Teaching

Core Courses

8 courses = 24 credits



Master's Project

Experiential Module = 5 credits



Comprehensive Exam

Final Portfolio = 1 credit

Certificate (new in 2021)

Core Courses

3 courses = 9 credits



Methods of FLT

OR

Program
Development

Any 2 other courses

You choose!

You choose!

Comprehensive Exam

Final Portfolio = 1 credit



PLAN YOUR TRAJECTORY

maflt.cal.msu.edu/semester-updates

How fast do you want to complete the program?

Year 1

Year 2

Year 3

Methods
Technology

Assessment
Culture

F/SLA
Special Topics

Language
Concepts
Program Admin

Experiential
Module
Portfolio

Order can vary, but consider when courses are offered each year.

FALL SEMESTER

Do you have around 20 hours per week for grad school? If not, you can take your time.

Year 1

Year 2

Year 3

Methods

Foreign
Language
Acquisition

Assessment

Language
Concepts

Culture

Special
Topics

Technology

Program
Admin

Experiential
Module
Portfolio

FALL SEMESTER



COURSE PLANNING CHART

- Discuss the chart in advising session – then enter plan at student.msu.edu

Use this chart to track which courses you have completed and when you plan to take your remaining courses. Scroll down for a reference chart with semesters when courses are offered. There are sample trajectories in the MAFLT Handbook and in the MAFLT Community resources, including the MAFLT Orientation slides. Add your name and the semesters to the chart, and then you can save the Word doc. Then attach it and/or copy and paste the chart into an email.

Key: SS20 = Spring 2020 US20 = Summer 2020 FS20 = Fall 2020 (and so on)

Course	Title	Completed	Planned
FLT 807			
FLT 860			

See [Enroll in Courses](#) page on SharePoint site:

FLT Course Offerings

Course Title	Usually offered in:
FLT 807 Methods of Foreign Language Teaching	Fall Spring Summer
FLT 808 Assessment for Foreign Language Teaching	Spring Summer
FLT 816 Teaching Culture in Foreign Language Courses	Spring
FLT 817 Foreign Language Program Development and Administration	Fall Spring
FLT 841 Special Topics (including Sociolinguistics and L2 Literacy)	Fall Spring Summer
FLT 845 Language Concepts for Foreign Language Teaching	Fall
FLT 860 Foreign or Second Language Acquisition (SLA)	Spring Summer
FLT 881 Teaching with Technology	Fall Summer
FLT 885 Experiential Modules – 5 credits (or 3 + 2)	Fall Spring Summer
FLT 898 Final Portfolio (MA Comprehensive Exam)	Fall Spring Summer

Last updated Summer 2021

Main Foreign Language Teaching @ Michigan State University
maflt@cal.msu.edu | maflt@alum.msu.edu



EXPERIENTIAL MODULES – 5-CREDIT PROJECT

- Designed by the student, supervised by one dedicated faculty mentor
- Capstone for program – bring together what you have learned and create something meaningful
- Many structures – can complete 1 project in 1 semester, 1 project in 2 semesters, or 2 projects
- Many possible structures – intended to match with and serve your professional goals.
- Generates evidence of your work and skills that can be shared in your portfolio.

MAFLT Showcase

maflt.cal.msu.edu/showcase

Examples of EM outcomes and portfolios

EM Types

- Action Research
- Ethnographic Project
- Community Outreach/Service Learning
- Language or Area Studies Immersion
- Teaching Practicum
- Program Evaluation and Administration
- Materials or Curriculum Design
- Professional Seminars on Language Teaching
- Conference Participation
- Self-Designed Module

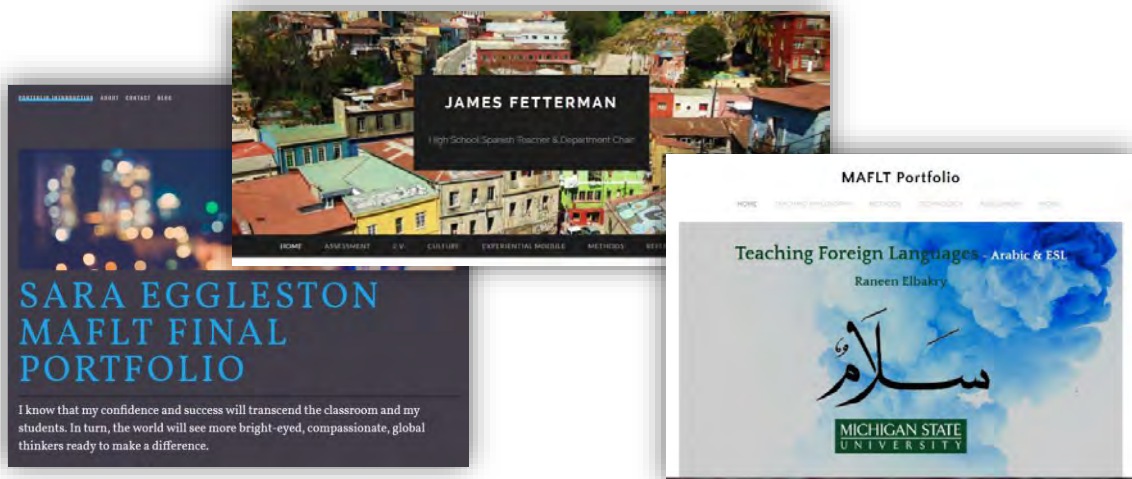
See MAFLT Community
in D2L for details



FINAL PORTFOLIO

- Includes materials from throughout your MAFLT coursework.
- Presents you as a master teacher – awareness, skills, experience, and accomplishments.

Alumni Sites: maflt.cal.msu.edu/portfolios



REQUIRED ELEMENTS

Portfolio Website Design

- Home Page, Introduction, and descriptive text throughout
- Theme, navigability, appeal to external audiences, etc.

Beliefs & Practices

- Teaching Philosophy
- Teaching Demonstration
- Teacher Research & Research Ethics

Credentials

- Education
- Experience + Resume
- Proficiency + OPI Certificate

Pedagogical Skills

- Assessment for FLT
- Culture and Interculturality in FLT
- Technology for FLT

Experiential Module

- EM Materials & Rationale
- EM Reflective Essay

Optional Elements

- Other Materials from coursework, lists of resources, etc.
- Contact Me page and form



D2L.MSU.EDU – LEARNING MANAGEMENT SYSTEM

Main platform for
all courses



MICHIGAN STATE UNIVERSITY D2L

Help

My Home

Login

[Need Login Help?](#)

Need Help?

MSU IT Service Desk:
Local: (517) 432-6200
Toll Free: (844) 678-6200
(North America and Hawaii)

Web:
[D2L Contact Form](#) | [D2L Help Site](#)

Spartan Life Online

[Code of Teaching Responsibility](#)

[Spartan Code of Honor Academic Pledge](#)

System Status

Service Alerts

Resolved [Incident - Resolved] beSocratic Is Unavailable ([Details](#))
Wed, Jul 21 4:19pm

Resolved [Incident - Resolved] D2L Is Experiencing Performance Issues ([Details](#))
Wed, Jul 21 4:03pm

help.d2l.msu.edu

D2L Community Site
Access anytime throughout
program – Pin to D2L Home!



MAFLT Community

Course Home Content Communication Discussions Assignments Links FAQ Awards Help More

MAFLT Community

Content Overview | Orientation Modules | D2L Support

What is Where?

[See OneNote Guidebook for help navigating program resources.](#)

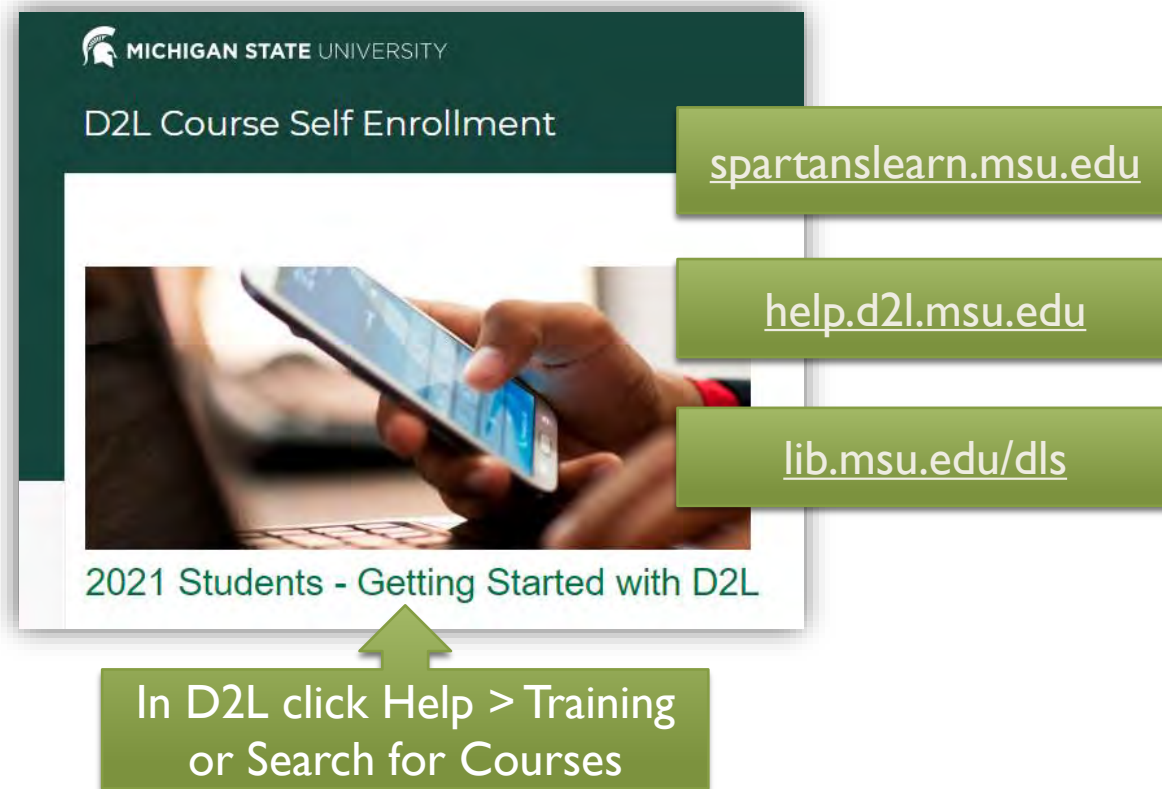
Teams

MAFLT Public Site
Current Students

Orientation Modules (redesign in 2022)

LEARNING TO LEARN ONLINE

From MSU



MICHIGAN STATE UNIVERSITY
D2L Course Self Enrollment

spartanslearn.msu.edu

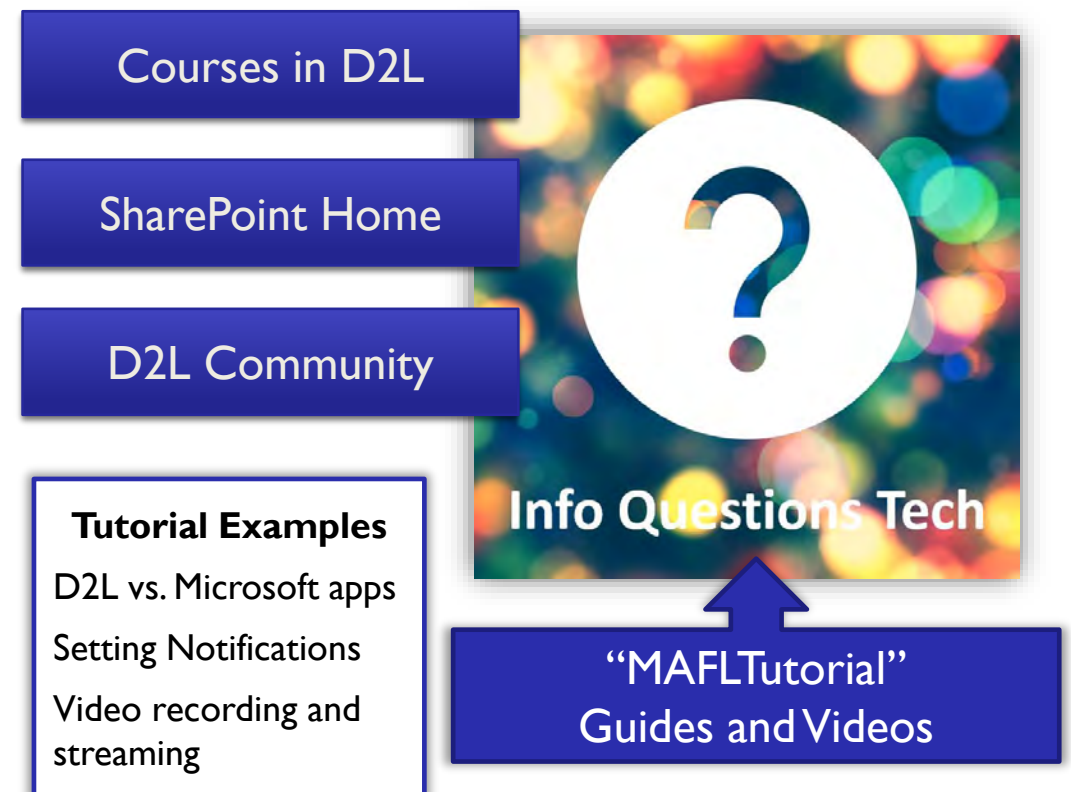
help.d2l.msu.edu

lib.msu.edu/dls

2021 Students - Getting Started with D2L

In D2L click Help > Training or Search for Courses

From the MAFLT



Courses in D2L

SharePoint Home

D2L Community

Tutorial Examples
D2L vs. Microsoft apps
Setting Notifications
Video recording and streaming

Info Questions Tech

“MAFLTutorial”
Guides and Videos

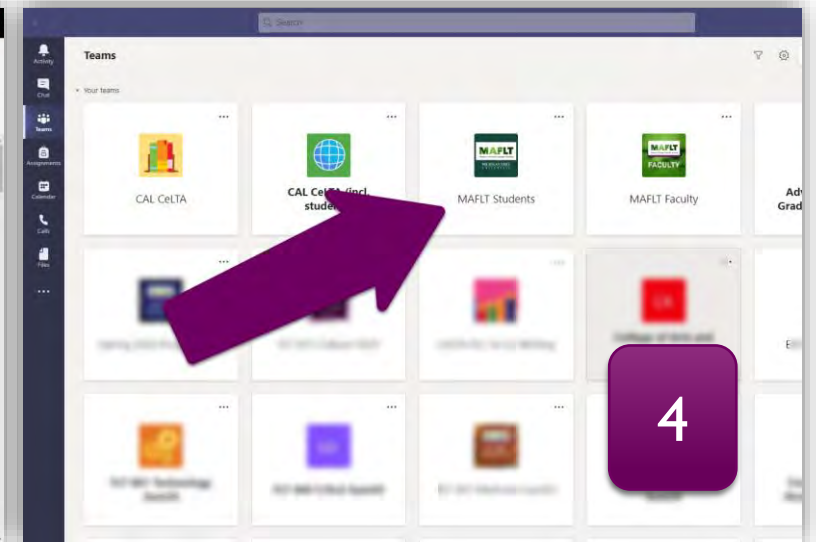
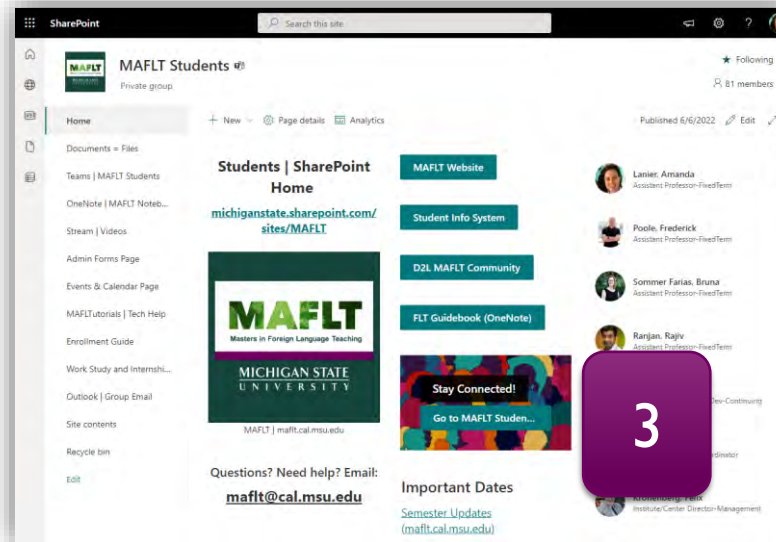
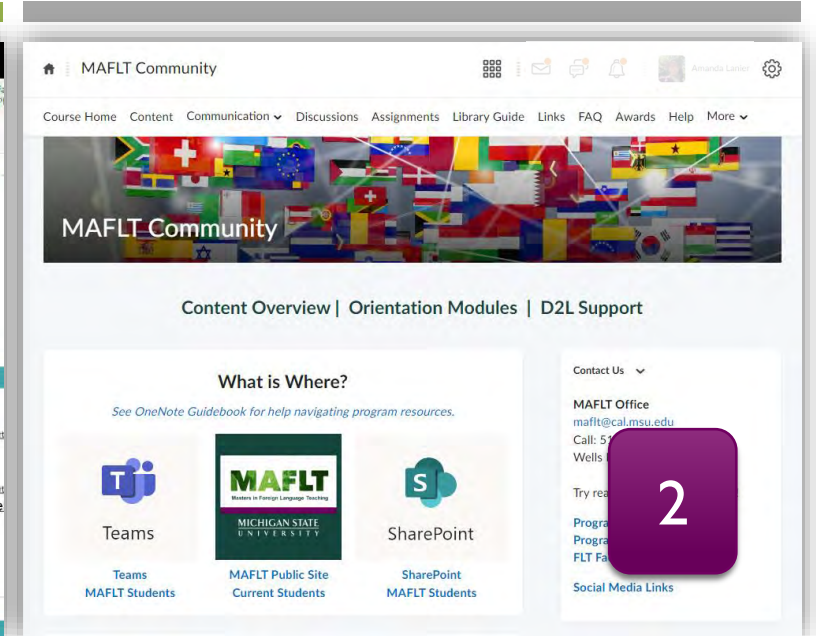
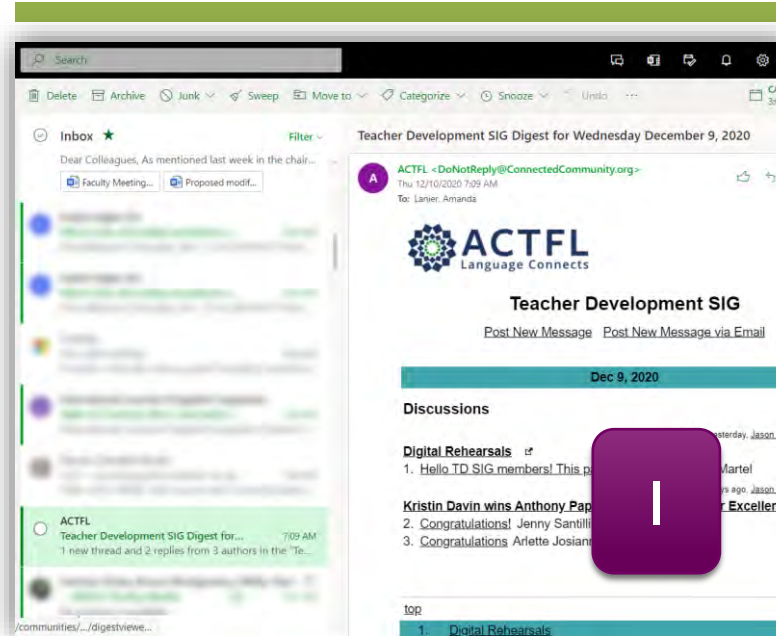
OUR PROGRAM PLATFORMS

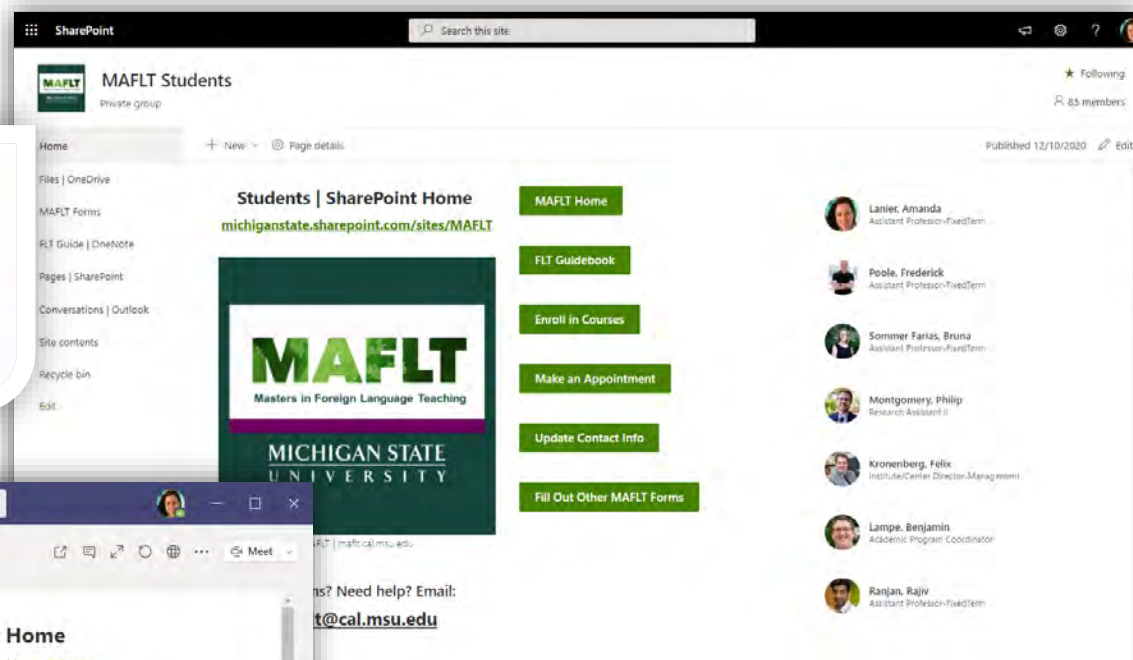
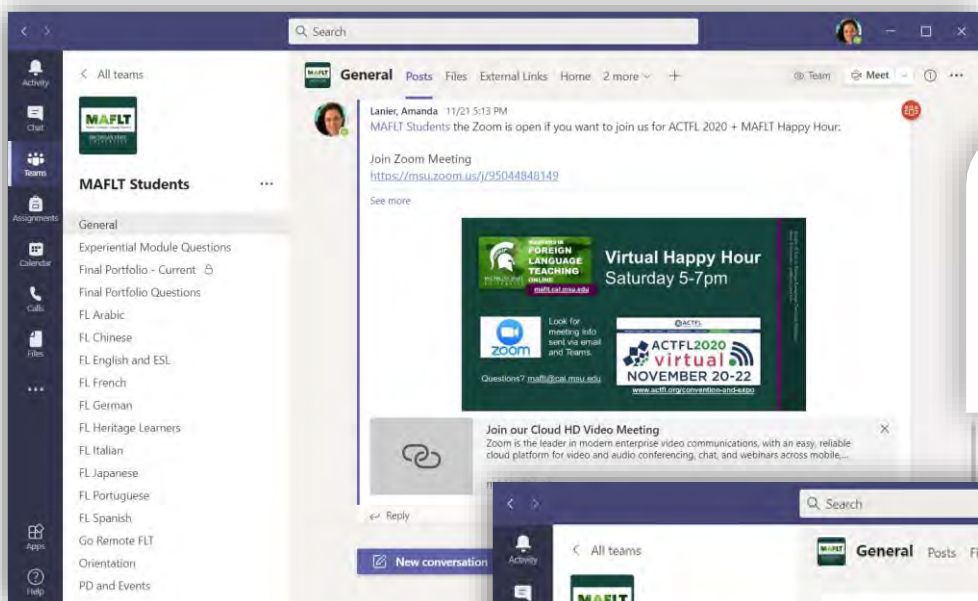
for Communication and Resources

1. SpartanMail / Outlook
2. D2L Community Site
3. SharePoint Site
4. Microsoft Teams

- MAFLT Students Team
- Each FLT Course Team
- Chat (DM) with instructors

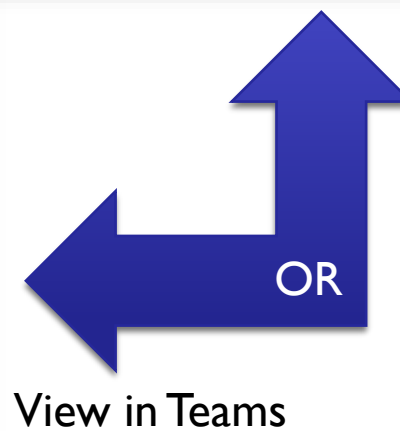
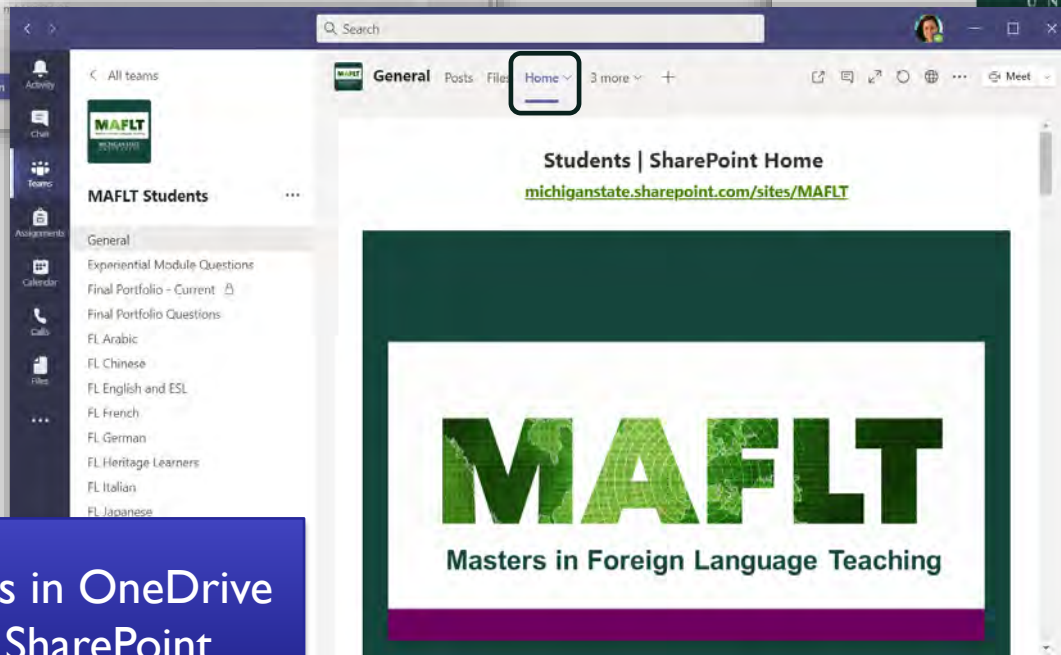
Check your messages!





Everything is connected in our Microsoft “Ecosystem”

Files in Teams = Files in OneDrive = Documents in SharePoint



View in Browser

SharePoint Home

View in Teams



RESOURCES – WHERE TO GO FOR ANSWERS

Start on our website: <http://maflt.cal.msu.edu> → FAQ page

MAFLT
Handbook

MAFLT
Community
in D2L

MAFLT Students
SharePoint

MAFLT Library
Guide + our
librarian

MSU Technology
Guides and
HelpDesk

FLT Courses
→ D2L and
Teams

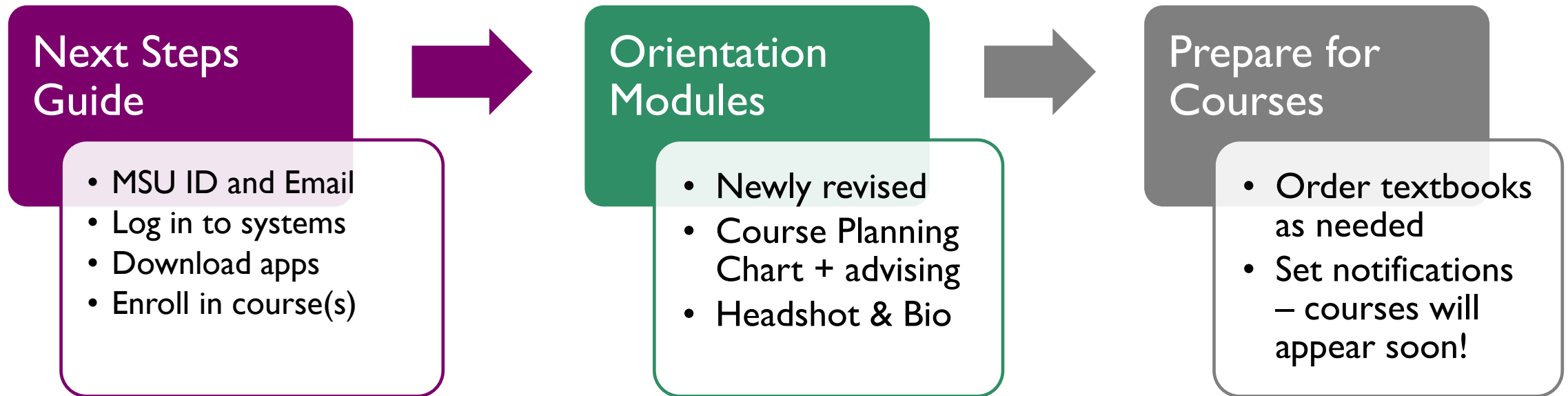
ADVICE FROM CURRENT STUDENTS

- Take your time with the program – plan carefully when you will take courses
- One course at a time is the norm if you have a full-time job – make sure set aside enough time!
- Be patient with the learning curve – and remember you are not the only one!
- Seek out interactions with classmates beyond D2L and assignments.
- Communicate with the faculty! They want to support your success and can be available when you are.
- Find your resources – MSU has a ton of resources, the MAFLT Library Guide is very helpful, and you can also look for help with technology, academic writing, and content on the web.





WHAT NEXT?



Instructors will send announcements when courses are active and available!

WHAT QUESTIONS DO YOU HAVE?



MAFLT
Public Site

[Latest Posts](#)



MAFLT
Community

d2l.msu.edu



MAFLT
Spartan365

sharepoint.com



MAFLT.CAL.MSU.EDU → EMAIL US AT: MAFLT@CAL.MSU.EDU